

HOBBY &
CRAFT

PRIMAVERA
SPRING
2020

reunión

PRIMETTE

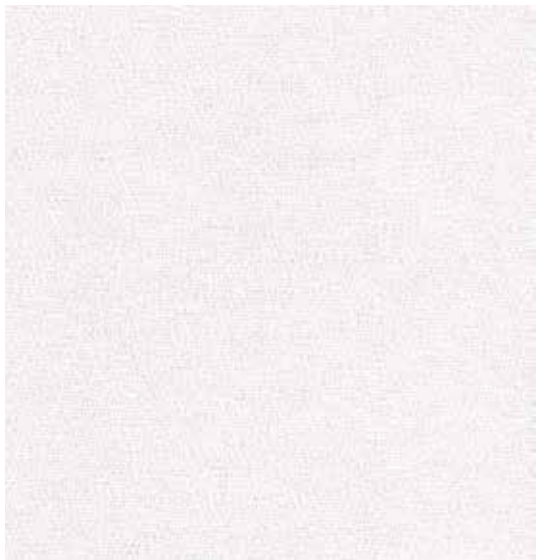
MADE IN ITALY

NOVITA'
2020!

Tessuto double face termomodellante /double-faced
heat-shaping fabric

Cod./Code: **TPRI** - Mis/Size: cm 48x 50

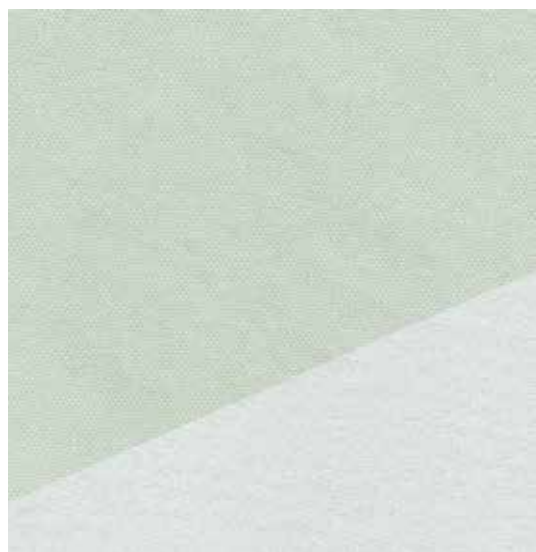
Cod./Code: **TPRIM** - Mis/Size: H cm 140 x 3 MT



Col. 22 LATTE/LATTE



Col. 52 BEIGE/LATTE



Col. 252 VERDE SALVIA/LATTE



Col. 292 AZZURRO/LATTE

PRIMETTE

MADE IN ITALY

NOVITA'
2020!

Tessuto double face termomodellante /double-faced
heat-shaping fabric

Cod./Code: **TPRI** - Mis/Size: cm 48x 50

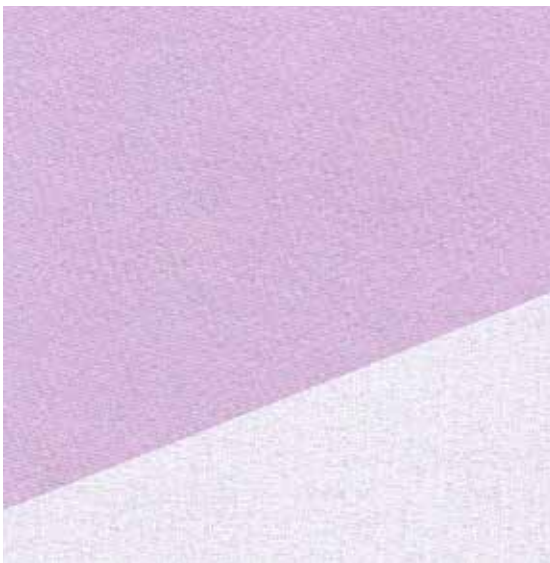
Cod./Code: **TPRIM** - Mis/Size: H cm 140 x 3 MT



Col. 435 TORTORA/BEIGE



Col. 472 CHIFFON/LATTE



Col. 512 LILLA/LATTE



VISI IN TESSUTO

Printed faces on fabric / Visages imprimés sur tissu



NOVITA'
2020!

VISO GRANDE

Big faces / Grand visages

Mis/Size: cm 19 Ø x sfere Ø cm 8-9 e uovo h 12 cm

BESSIE Cod. **VIS1GBES**



comprendivo di nasino
per effetto 3D

NEW



VISI PICCOLI

Small faces / Petites visages

Mis/Size: cm 13 Ø x sfere Ø cm 6

BETH Cod. **VIS1PBET**



NEW

FUNNY Cod. **VIS1PFUN**



NEW

GEA Cod. **VIS1PGEA**



NEW

EMY Cod. **VIS1PEMY**



NEW

MALY Cod. **VIS1PMAL**



NEW

adatto anche
per uovo h cm 6

VISO MINI

Extra small faces / Plus petites visages

Mis/Size: cm 7,5 Ø x sfere Ø cm 4 e uovo h 4 cm

CHERIE Cod. **VIS1ZCHE**



NEW

VISI IN TESSUTO

Printed faces on fabric / Visages imprimés sur tissu



MADE IN ITALY

VISI PER BAMBOLE GRANDI Big faces / Grand visages - Mis/Size: cm 19 Ø x sfera Ø cm 8-9
ALICE Cod. VIS1GALI CARLOTTA Cod. VIS1GCAR MARILÚ Cod. VIS1GMAR CANDY Cod. VIS1GCAN



VISI MEDI Medium faces / Moyen visages Mis/Size: cm 16 Ø x sfera Ø cm 7-8

BABY
Cod. VIS1MBAB

DREAMY
Cod. VIS1MDRE

ANGIE
Cod. VIS1MANG

NINA
Cod. VIS1MNIN

LOVELY
Cod. VIS1MLOV



POPPY
Cod. VIS1MPOP

JOEL
Cod. VIS1MJOE

SWEN
Cod. VIS1MSWE



VISI PICCOLI Small faces / Petites visages Mis/Size: cm 13 Ø x sfera Ø cm 6

ARMONY
Cod. VIS1PARM

MIMÍ
Cod. VIS1PMIM

SHINNY
Cod. VIS1PSHI

SUGAR
Cod. VIS1PSUG

SMYLE
Cod. VIS1PSMI

DOBY
Cod. VIS1PDOB



VISI MINI Extra small faces / Plus petites visages - Mis/Size: cm 7,5 Ø x sfera Ø cm 4

JOLIE
Cod. VIS1ZJOL

RENEE
Cod. VIS1ZREN

CHANEL
Cod. VIS1ZCHA

CELINE
Cod. VIS1ZCEL

NANETTE
Cod. VIS1ZNaN



TUBOLARI



MADE IN ITALY

NOVITA'
2020!

Tubular knitted/ Tubulaire en tricot

VOILE

Cod./Code: **TU**
Mis/Size: cm 50



Col. 260
BEIGE



Col. 261
BIANCO



Col. 262
LILLA



Col. 263
ROSA



Col. 264
VERDE SALVIA



Col. 265
AZZURRO



TUBOLARI IN MAGLIA MADE IN ITALY

NOVITA'
2020!

Tubular knitted/ Tubulaire en tricot

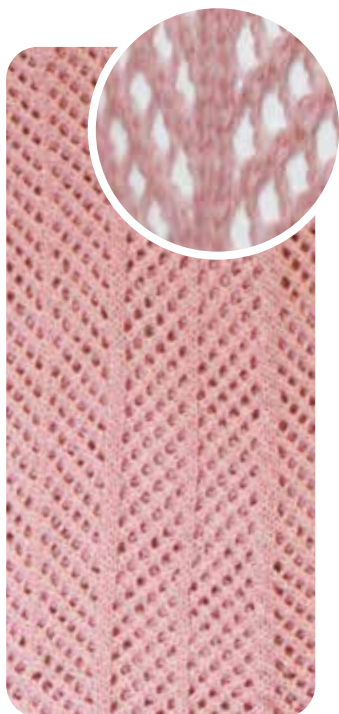
BARRE'

Cod./Code: **TU** Mis/Size: cm 50

DESC.: Tubolare in Cotone - tubular in cotton - tubulaire en coton



Col. 270
AZZURRO



Col. 271
CHIFFON



Col. 272
ROSA BABY



Col. 273
LILLA



Col. 274
BIANCO



Col. 275
LATTE



Col. 276
VERDE SALVIA

Tubular knitted/ Tubulaire en tricot

TWILL

Cod./Code: **TU**
Mis/Size: cm 50



Col.280
CORDA/LATTE

PLUME

Cod./Code: **TU**
Mis/Size: cm 40



Col.290
LATTE

TUSSAH

Cod./Code: **TU**
Mis/Size: cm 50



Col.285
BURRO

MINI

Cod./Code: **TU**
Mis/Size: cm 100 Larg. cm 3,5



Col. 130
BIANCO



Col.132
TORTORA



Col.133
ROSA



Col.134
AZZURRO



Col. 135
CREMA



Col. 136
ROSA CIPRIA



Col. 137
GHIACCIO



Col. 138
LATTE

NEW



Col.139
VERDE SALVIA

NEW



Col. 140
LILLA

NEW

TUBOLARI IN MAGLIA

  MADE IN ITALY

Tubular knitted/ Tubulaire en tricot

PIZZO

Cod./Code: **TU** - Mis/Size: cm 100 - DESC.: Tubolare in Cotone tubular in cotton - tubulaire en coton



Col. 243
BIANCO



Col. 246
LATTE



Col. 245
TORTORA



Col. 248
ORCHIDEA

NASTRI Ribbons / Rubans

PELUCHE RICCIO

Cod./Code: **NAEH1082**



Col.06B



Col. 06C



Col. 06W



Col. 06P

MONGOLIA

Cod./Code: **NAEH903**

Mis./Size: H 12 cm



Col. 01A AVORIO

BATISTE LARGO Cod./Code: **NVBAT25** Mis/Size: 25mm.x 20mt



Col.00
BIANCO



Col.18
ROSA



Col. 42
AZZURRO



Col.60
SALVIA



Col.70
PANNA



Col.71
TORTORA

NEW



NOVITA' 2020!

renkalik

NASTRI

Ribbons / Rubans

NOVITA'
2020!

BATISTE STRETTO

Cod./Code: **NVBAT15** Mis/Size: 15 mm x 20mt



Col.00 BIANCO



Col.60 SALVIA

NEW



Col.18 ROSA



Col.70 PANNA



Col.42 AZZURRO



Col.71 TORTORA



HEMP

Cod./Code: **NVHEM**
Mis/Size: H 7 mm



Col.72 NATURALE

NEW

POLLY

Cod./Code: **NVPOL**
Mis/Size: H 10 mm



Col.70 NATURALE

NEW

ODILIA

Cod./Code: **NVODI**
Mis/Size: H 50 mm



Col.70 NATURALE

NEW

JUTE

Cod./Code: **NVJTE**
Mis/Size: H 36 cm



Col.70 NATURALE

NEW

MACRAME'

Cod./Code: **NVMAC**
Mis/Size: H 5 mm



Col.60 SALVIA



Col.70 NATURALE

NEW



HOME DECOR

legno - wood - bois

NOVITA
2020!

PORTA DELLE FATE

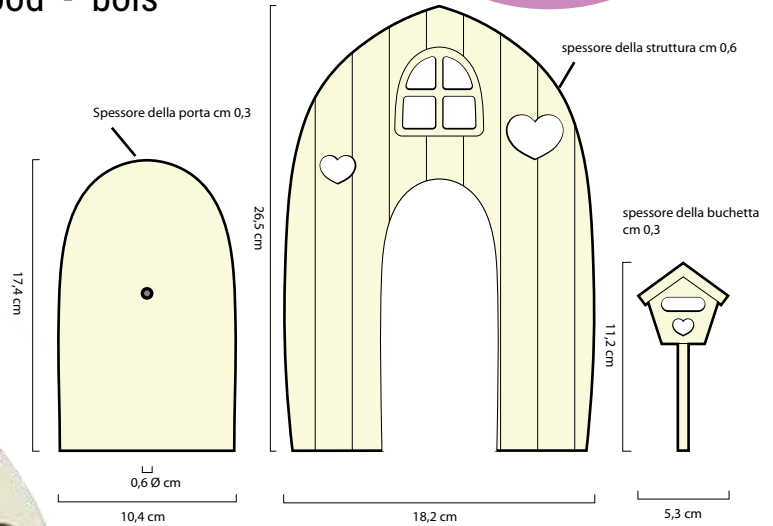
Cod./Code: **LEL076**

Mis./Size struttura: 26,5x18,2 cm spessore 6 mm

Mis./Size porta: 17,4x10,4 cm spessore 6 mm

Mis./Size buchetta: 11,2x5,3 cm spessore 6 mm

NEW



MECCANISMO OROLOGIO

Cod./Code: **LEL080**

Mis./Size: 5,6x5,6 cm

spessore 1,6 cm

NEW



HOME DECOR

legno - wood - bois

NOVITA'
2020!

GHIRLANDA PRIMAVERA

Cod./Code: **LEL075**

Mis./Size: 24,8x25,4 cm
spessore 7 mm



NEW

LANTERNA SWEET

6 pezzi ad incastro

Cod./Code: **LEL074**

Mis./Size: 15X15X15 cm
spessore 3 mm



NEW



HOME DECOR

legno - wood - bois

NOVITA
2020!

TEMPLE LAMP

Cod./Code: **WEM0003405**

Mis./Size: 16,6x17,7 cm
spessore 2,5 cm



NEW

FARO LAMP

Cod./Code: **WEM0003409**

Mis./Size: 15,5x19 cm
spessore 3 cm



NEW

BUTTERFLY LAMP

Cod./Code: **WEM0003312**

Mis./Size: 18,5x16,2 cm
spessore 2,5 cm



NEW

SUPPORTO MANDALA

Cod./Code: **WEM00055894**

Mis./Size: 30x30 cm
spessore 7 mm



NEW

CORNICE OVALE

Cod./Code: **WEM00038144**

Mis./Size: 24x16,8 cm
spessore 3 mm

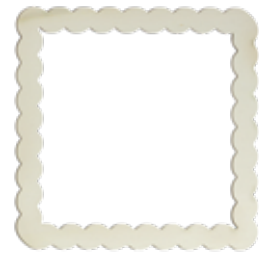


NEW

CORNICE QUADRATA

Cod./Code: **WEM00034894**

Mis./Size: 18x18 cm spessore 3 mm



NEW

BOTTONI

Cod./Code: **WEM0005406**

Mis./Size: 4 cm / 3,2 cm / 2,4 cm
spessore 7 mm



NEW

BOTTONI A CUORE

Cod./Code: **WEM0005404**

Mis./Size: 4 cm / 3,2 cm / 2,4 cm
spessore 7 mm



NEW

NUMERI

Cod./Code: **WEM0003436**

Mis./Size: dim. 3x3 cm
spessore 3 mm



NEW

ALFABETO

Cod./Code: **WEM0003420**

Mis./Size: dim. 1,5x1,5 cm
spessore 3 mm



NEW

HOME DECOR

legno - wood - bois

CORNICE QUADRATA

Cod./Code: **LEN014**
Mis./Size: 25X25x7,5 cm



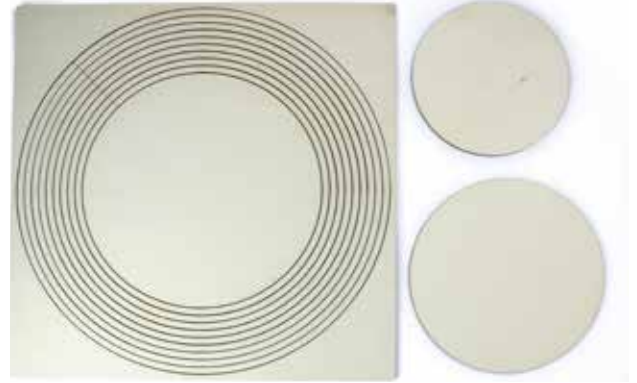
CORNICE ROTONDA

Cod./Code: **LEN015**
Mis./Size: Ø 30x5 cm



CERCHI CONCENTRICI SATURNO

Des. 9 cerchi concentrici + dischi
Cod./Code: **LEL065**
Mis./Size: Ø 30 cm il cerchio maggiore



SUPPORTO QUADRATO

Cod./Code: **LEL077**
Mis./Size: 25x25 cm
spessore 6 mm



NEW

SUPPORTO ROTONDO

Cod./Code: **LEL078**
Mis./Size: 30x30 cm
spessore 6 mm



NEW

SUPPORTO BETTINA

Cod./Code: **LEL079**
Mis./Size: 21x21 cm
spessore 6 mm



NEW

SUPPORTO OVALE

Cod./Code: **WEM0005479**
Mis./Size: 33X15 cm spessore 7 mm



NEW

SUPPORTO RETTANGOLARE

Cod./Code: **WEM0004623**
Mis./Size: 27x8 cm spessore 7 mm



NEW

HOME DECOR

legno - wood - bois

NOVITA
2020!

CUORE

Cod./Code:

WEM00034074

Mis/Size: 14,4x12,9 cm
spessore 3 mm



NEW

CUORE

Cod./Code:

WEM00034064

Mis/Size: 18x16,2 cm
spessore 3 mm



NEW

PALLONCINI

Cod./Code:

WEM00053294

Mis/Size: 10,8x15 cm
spessore 3 mm



NEW

CICOGNA

Cod./Code: **WEM00046294**

Mis/Size: 13,2x18 cm
spessore 3 mm



NEW

CASSETTA

Cod./Code:

WEM00050051

Mis/Size: 5,9x9,1 cm
spessore 3 mm



NEW

CASSETTA

Cod./Code:

WEM00050062

Mis/Size: 5,6x12 cm
spessore 3 mm



NEW

CASSETTA PER PASSEROTTI

Cod./Code: **WEM0004100**

Mis/Size: 7x9,8x6,5 cm
spessore 3 mm



NEW



CAVALLINO A DONDOLO

Cod./Code:

WEM0006094

Mis/Size: 7x5 cm
spessore 3 mm



NEW

CAVALLINO A DONDOLO 3D

Cod./Code:

WEM0006081

Mis/Size: 25x17 cm
spessore 3 mm



NEW

STACCIONATA PICCOLA

Cod./Code: **WEM0004961**

Mis/Size: 7,7x3,8 cm
spessore 3 mm

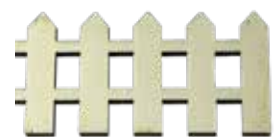


NEW

STACCIONATA GRANDE

Cod./Code: **WEM0004962**

Mis/Size: 11,6x5,7cm
spessore 3 mm



NEW

BICICLETTA BURLEY

Cod./Code: **LEN072**

Mis/Size: 43X51X31 cm



NEW

CARRETTO PONY

Cod./Code: **LEN073**

Mis/Size: 53X21X20 cm



NEW

VASO CACHEPOT

Cod./Code: **LEL071**

Mis/Size: 17,5X10,5X11 cm



NEW

CASSETTA SAGOME LEGNO PRIMAVERA 2020

Cod./Code: **LEL081**



SWEET WOOD

MADE IN ITALY



Sagome leggere stampate e fustellate in cartone vegetale mm 1,2
Printed light die-cut shapes in vegetable cardboard mm 1,2
Formes découpées et imprimé dans du carton végétal mm1,2

ALBERI

Cod./Code: **LESWA5002**

Mis/Size: A5



PUPPIES

Cod./Code: **LESWA5018**

Mis./Size: A5



NEW



STENCIL

GEOMETRIC

Cod./Code: **WE00062421**

Mis/Size: 25X25 cm



NEW

FLORAL

Cod./Code: **WE00062431**

Mis/Size: 30X30 cm



NEW

BOTANICA

Botany / Botanique

PEPPERMINT

Cod. **PTL17169SLF**

Mis./Size: Altezza/Height cm 45



BERRY

Cod. **PTL17080GD**

Mis./Size: Altezza/Height cm 70



GROBE

Cod. **PTL16013SLF**

Mis./Size: Altezza/Height cm 80



EUCALYPTUS

Cod. **PTL16012SLF**

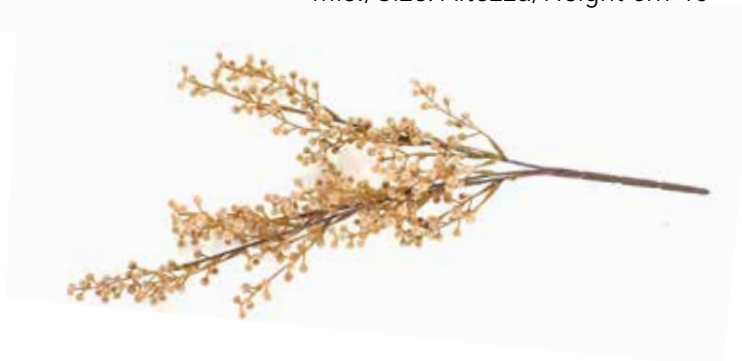
Mis./Size: Altezza/Height cm 70



WILLOW

Cod. **PTL15349GD**

Mis./Size: Altezza/Height cm 45



DUSTY GRASS

Cod. **PTL16081GD**

Mis./Size: Altezza/Height cm 40



WILD GRASS

Cod. **PTL16111GD**

Mis./Size: Altezza/Height cm 40



BOTANICA

Botany / Botanique

RAMI

COD. **PBGB**

Col. **074** ramo platicerium

Misure/Size: Altezza/Height cm70



Col. **009** ramo dusty miller

Misure/Size: Altezza/Height cm 60



BACCA MIRTILLO

COD. **PBFK**



Col. **020** Colori assortiti

Misure/Size: Altezza/Height cm 18

Desc.: Botany / Botanique

BACCHE FLOCCATE

Cod./Code: **PBFK**

Misure/Size: H cm 19



Col.034B
BURGUNDY



Col.034G
GREEN

PISTILLO BOUQUET

COD. **PBFK**



Col. **028** MELINA GREEN

Misure/Size: Altezza/Height cm 11



Col. **028R** MELINA RED

Misure/Size: Altezza/Height cm 11

ACCESSORI BOTANICA

Paper / botanique

MARGHERITE CARTA

COD. **FCMA**

Misure/Size: Ø 40 mm



Col. 50E
Fuxia



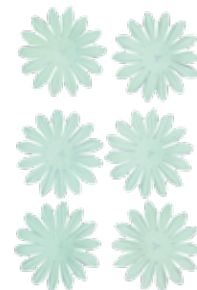
Col. 01E
Bianco



Col. 018
Rosa



Col. 10E
Giallo



Col. 100E
Tiffany

FIORI CARTA COLORI ASSORTITI

COD. **FCMX01**



FIORI CARTA ROSA/AZZURRO

COD. **FCMX02**



FIORE CARTA 5 PETALI

COD. **FC5P**

Misure/Size mm: Ø 4 cm



Col. 01E Bianco



Col. 51E Fuxia



Col. 63E Violetto



Col. 079E Rosso

PISTILLI CON TESTA DOPPIA

COD. **PISGO**

Desc.: pistilli con testa doppia



Col. P
Rosa



Col. W
White



Col. Y
Yellow

MATTONE SPUGNA DRY

COD. **P8404**

Misure/Size:
cm 25 x 10 x 8



CORDA MARINA

Cod./Code: **FTC07**

Mis./Size: mm 7 ø



ACCESSORI BOTANICA

Paper / botanique

GUTTAPERCA VERDE

COD. **P2122GUT**

Misure/Size: 13 mm x 27,4 mt

Colore/Color: Verde/Green

Desc.: Nastro crespato
adesivo per rivestimenti /
Crepe tape coating



GUTTAPERCA BIANCO

COD. **P2123GUT**

Misure/Size: 13 mm x 27,4 mt

Colore/Color: Bianco/White

Desc.: Nastro crespato
adesivo per rivestimenti /
Crepe tape coating



GUTTAPERCA VERDE SALVIA

COD. **P2192GUT**

Misure/Size: 13 mm x 27,4 mt

Colore/Color: Verde Salvia/Sage Green

Desc.: Nastro crespato
adesivo per rivestimenti /
Crepe tape coating

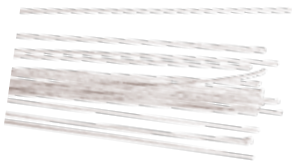


BARRETTE FILO METALLICO BIANCO

COD. **P4000**

Misure/Size mm: Ø 0,75

Altezza/Height cm: 40/50



BARRETTE FILO METALLICO

COD. **P3903FM**

Misure/Size : 25 cm - Ø 0,75 mm

Desc.: Filo metallico per la realizzazione
di steli di fiori / Wire for flower stem.



FILO FERRO METALLICO

Cod./Code: **P5200**

FILO FERRO GREGGIO

Wire / fil métallique

Ø 0,7 MM BOBINA DA 100 gr



FILO ZINCATO

Cod./Code: **P5100**

spessore 0,3 mm



FILO ALLUMINIO ANIMATO

Cod./Code: **P50**

Mis/Size: Ø 2 MM LUNGHEZZA 12 MT.



Col. 00 SILVER



Col. 10 GOLD



Col. 20 MARRONE



Col. 30 NERO
SCURO

RESINA ADESIVA

Cod./Code: **THRES**

Mis./Size: 10 metri H cm 50

Adhesive resin / Résine adhésive



CORDA TELAIO LINO BIANCA

Cod./Code: **FLTEL3/6**

Mis/Size: 180 MT c.a.gr 250 c.a.



FILO COTONE PER LYCRA

Cod./Code: **FLR025**

mis./size: 025 - mt. 300



PLEXIGLASS

UOVO KRISTAL

Cod./Code: **POKUO08**

Mis/Size: cm 8 H - cm 5,5 ø

Cod./Code: **POKUO10**

Mis/Size: cm 10 H - cm 6,5 ø

Cod./Code: **POKUO12**

Mis/Size: cm 12 H

Cod./Code: **POKUO16**

Mis/Size: cm 16 H



CAMPANELLINA KRISTAL

Cod./Code: **POKCA08**

Misure/Size: 6,5 ø cm x H 8 cm



NEW

DIVISORIO

X UOVA KRISTAL

Cod./Code: **POKUO08S**

Mis/Size: H 8 cm

Cod./Code: **POKUO10S**

Mis/Size: H 10 cm

Cod./Code: **POKUO12S**

Mis/Size: H 12 cm

Cod./Code: **POKUO16S**

Mis/Size: H 16 cm



CARTELLINE TRANSPAR

FOGLIO ACETATO

Cod./Code: **SPTR18A4**

Mis/Size: Formato A4

FOGLIO ACETATO

Cod./Code: **SPTR18A3**

Mis/Size: Formato A3



MEDAGLIONE KRISTAL

Cod./Code: **POKMED09**

Mis/Size: cm 9 ø - cm 7 spess.

Cod./Code: **POKMED11**

Mis/Size: cm 11 ø - cm 7 spess.



POLISTIROLO CORONA POLISTIROLO TONDA

Cod./Code: **POCOT30**

Mis/Size: cm 30 ø interno cm 19,5 ø h 5 cm



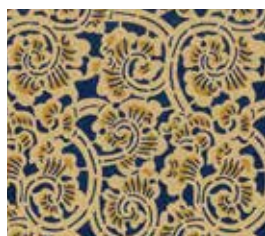
sezione

NEW

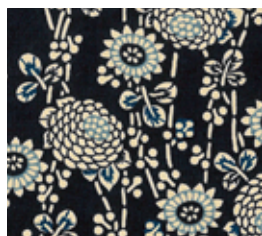
CHIYOGAMI JAPANESE PAPERS

COD. **CJ**

Misure/Size cm: 64 X 97 Fg./Sh. gr 70/mq



Col. 6251



Col. 6207



Col. 7590



Col. 7825



Col. 8044



Col. 8082



Col. 10882



Col. 10218



Col. 8088



Col. 10219

COLORE MYA

Pittura acrilica



MYA 01 50 ml Blanco
(WEM0005949)



MYA 02 50 ml Crudo
(WEM0005950)



MYA 03 50 ml
Rosa Claro (WEM0005951)



MYA 04 50 ml Lino
(WEM0005952)



MYA 05 50 ml Lila Claro
(WEM0005953)



MYA 06 50 ml
Blanco Vintage (WEM0005954)



MYA 07 50 ml Beige
(WEM0005955)



MYA 08 50 ml Rosa Bebé
(WEM0005956)



MYA 09 50 ml Arena
(WEM0005957)



MYA 10 50 ml Hortensia
(WEM0005958)



MYA 11 50 ml Vaniglia
(WEM0005959)



MYA 12 50 ml Melocotón
(WEM0005960)



MYA 13 50 ml
Rosa Vintage
(WEM0005961)



MYA 14 50 ml Terra
(WEM0005962)



MYA 15 50 ml Lila
(WEM0005963)



MYA 16 50 ml Amarillo
Bebé (WEM0005964)

COLORE MYA

Pittura acrilica



MYA 17 50 ml Naranja
(WEM0005965)



MYA 18 50 ml Salmón
(WEM0005966)



MYA 19 50 ml GrisTopo
(WEM0005967)



MYA 20 50 ml Malva
(WEM0005968)



MYA 21 50 ml Amarillo
(WEM0005969)



MYA 22 50 ml Terracota
(WEM0005970)



MYA 23 50 ml Rojo
(WEM0005971)



MYA 24 50 ml Mostaza
(WEM0005972)



MYA 25 50 ml Chocolate
(WEM0005973)



MYA 26 50 ml RojoÓxido
(WEM0005974)



MYA 27 50 ml Rosa Chicle
(WEM0005975)



MYA 28 50 ml Tabaco
(WEM0005976)



MYA 29 50 ml Coral
(WEM0005977)



MYA 30 50 ml Taupe
(WEM0005978)



MYA 31 50 ml Frambuesa
(WEM0005979)



MYA 32 50 ml Paraiba
(WEM0005980)

COLORE MYA

Pittura acrilica



MYA 33 50 ml Azafrán
(WEM0005981)



MYA 34 50 ml Aguamarina
(WEM0005982)



MYA 35 50 ml Azul Noche
(WEM0005983)



MYA 36 50 ml Gris Claro
(WEM0005984)



MYA 37 50 ml Azul Bebé
(WEM0005985)



MYA 38 50 ml Zinc
(WEM0005986)



MYA 39 50 ml Menta
(WEM0005987)



MYA 40 50 ml Verdemar
(WEM0005988)



MYA 41 50 ml Gris Medio
(WEM0005989)



MYA 42 50 ml Celeste
(WEM0005990)



MYA 43 50 ml Gris Pizarra
(WEM0005991)



MYA 44 50 ml Turquesa
Vintage (WEM0005992)



MYA 45 50 ml Verde Bebé
(WEM0005993)



MYA 46 50 ml Negro
(WEM0005994)



MYA 47 50 ml Azul
Vintage (WEM0005995)



MYA 48 50 ml Azul
Grisáceo (WEM0005996)

COLORE MYA

Pittura acrilica



MYA 49 50 ml Caribe
(WEM0005997)



MYA 50 50 ml Salvia
(WEM0005998)



MYA 51 50 ml Gris Vintage
(WEM0005999)



MYA 52 50 ml Verde
Vintage (WEM0006000)



MYA 53 50 ml Azul Prusia
(WEM0006001)



MYA 54 50 ml Turquesa
(WEM0006002)



MYA 55 50 ml Pistacho
(WEM0006003)



MYA 56 50 ml Bambú
(WEM0006004)



MYA 57 50 ml Aguacate
(WEM0006005)



MYA 58 50 ml Oliva
(WEM0006006)



MYA 59 50 ml Antracita
(WEM0006007)



MYA 60 50 ml Acero
(WEM0006008)



Espositore per colori
MYA 50 ml 360 un.
(WEM0006043)

disponibile anche la
versione per 180 un.
(WEM00060431)

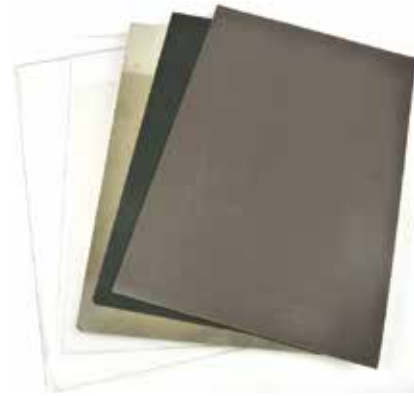


Cartella colori MYA
(WEM0005496)

ACCESSORI



Power Boss **NEEP001**
Fustellatrice e goffratrice elettrica A4
A4 Electric diecut and embossing machine



Piani per Power Boss **NEEP001**
NETPPB001 transparent spare cutting plate
(220x320x5 mm)
NETPPB002 transparent plate (220x320x3 mm)
NEMSPB001 spare metal plate (215x320x0,3 mm)
NEEMPB001 spare embossing mat(215x320x0,3 mm)
NEMPPB001 spare magnetic plate (215x320x0,7 mm)



PressBoss Pro **NENPB002** - A4
Fustellatrice e goffratrice a rulli
regolabili
Diecut- and embossing machine
with adjustable rollers



Piani per A4 Power Boss **NENPB002**
NEMAT002 rubber embossing MAT A4 (205x295x1,5 mm)
NENPBT001 Transparent shim (A4) 5 mm
NENPBT002 Transparent shim (A4) 4 mm
NENPBM001 Metal plate A4
NENPBW001 white cutting plate (a4) 12 mm



PressBoy Pro **NENPB003** - A5
Fustellatrice e goffratrice a rulli
regolabili
Diecut- and embossing machine
with adjustable rollers



Piani per PressBoy Pro **NENPB003**
NENPBW002 white plate (A5) 225X145X12 mm
NENPBT003 Transparent Plate (225X150X5 mm)
NEMAT003 rubber embossing mat A5 (225X150X1,5 mm)
NENPBM002 Metal plate (A5) (210X150X1 mm)

INCHIOSTRI

MEMENTO INK - DEW DROPS

Inchiostro colorante (completamente solubile in acqua)

ideale per sfumature con Primette

Tempo di asciugatura: rapido

Da utilizzare su: carta liscia e opaca, terracotta, tessuto e cuoio non colorato.

Non adatto a colori scuri

Pulizia: con acqua e possibilmente un po' di sapone

Privi di acido

Base: this is a dye-ink (completely soluble in water)

To use on: smooth and matte paper, terracotta, fabric and undyed leather.

Not suitable for dark colors



DANDELION
NEMD100



CANTALOUPE
NEMD103



TANGELO
NEMD200



MOROCCO
NEMD201



LADYBUG
NEMD300



RHUBARB STALK
NEMD301



LOVE LETTER
NEMD302



ROSE BUD
NEMD400



ANGEL PINK
NEMD404



GRAPE JELLY
NEMD500



LILAC POSIE
NEMD501



LULU
LAVENDER
NEMD504



SWEET PLUM
NEMD506



ELDERBERRY
NEMD507



DANUBE BLUE
NEMD600



BAHAMA BLUE
NEMD601



TEAL ZEAL
NEMD602



SUMMER SKY
NEMD604



NAUTICAL BLUE
NEMD607



PARIS DUSK
NEMD608



COTTAGE IVY
NEMD701



PEAR TART
NEMD703



NEW SPROUT
NEMD704



PISTACHIO
NEMD706



BAMBOO LEAVES
NEMD707



OLIVE GROVE
NEMD708



NORTHERN PINE
NEMD709



RICH COCOA
NEMD800



POTTER'S CLAY
NEMD801



PEANUT BRITTLE
NEMD802



DESERT SAND
NEMD804



TOFFEE CRUNCH
NEMD805



ESPRESSO TRUFFLE
NEMD808



TUXEDO BLACK
NEMD900



LONDON FOG
NEMD901



GRAY FLANNEL
NEMD 902



INCHIOSTRI

VERSA MAGIC - DEW DROPS

Base: inchiostro a pigmenti con pigmento di gesso
ideale per colorare il tessuto Primette

Tempo di asciugatura: richiede un po' più di tempo, il tempo di asciugatura
può essere accelerato con uno strumento termico

Pulizia: con acqua e possibilmente un po' di sapone

Base: pigment ink with chalk pigment

Drying time: takes a bit longer, the drying time
can be accelerated with a heat tool

Cleaning: with water and possibly a little soap - Acid-free



							
MANGO MADNESS NEGD011	RED MAGIC NEGD012	TURQUOISE GEM NEGD015	THATCHED STRAW NEGD031	PERSIMMON NEGD033	PIXIE DUST NEGD034	SPRING PANSY NEGD035	PRETTY PETUNIA NEGD036
							
SEA BREEZE NEGD037	AQUATIC SPLASH NEGD038	KEY LIME NEGD039	JUMBO JAVA NEGD052	RED BRICK NEGD053	PERFECT PLUMERIA NEGD054	PURP. HYDRANGEA NEGD055	NIGHT SKY NEGD056
							
OCEAN DEPTH NEGD057	HINT OF PESTO NEGD058	SPANISH OLIVE NEGD059	TEA LEAVES NEGD060	PUMPKIN SPICE NEGD061	GINGERBREAD NEGD062	EGGPLANT NEGD063	SAHARA SAND NEGD072
							
PINK GRAPEFRUIT NEGD074	PINK PETUNIA NEGD075	MALTED MAUVE NEGD076	ASPEN MIST NEGD077	AEGEAN BLUE NEGD078	OASIS GREEN NEGD079	ALOE VERA NEGD080	NIAGARA MIST NEGD081
							
WHEAT NEGD082	SAGE NEGD083	MIDNIGHT BLACK NEGD091	CLOUD WHITE NEGD092				



ACCESSORI

ACRYLIC BLOCK

NEAB005 5X8 cm
 NEAB006 7X9 cm
 NEAB007 9X12 cm
 NEAB008 9X16 cm



NEAB005



NEAB006



NEAB007



NEAB008

WATERBRUSH PEN



NEWB001

STORAGE CASE BOX FOR DAUBER



NESTOR21

PAPER STUMPS



NEDO001



NEDO002



NEDO003



NEDO004

STAMPING BUDDY PRO



NESTB002

REFIL FOAM FOR NEIAP003



NEIAP003

INK APPLICATOR ROUND



NEIAP003

TACKY GLUE



NETGL002

ULTRAFINE TIP GLUE-APPLICATOR



NEUGB001

LARGE SPONGE DAUBER



NEDAUB001

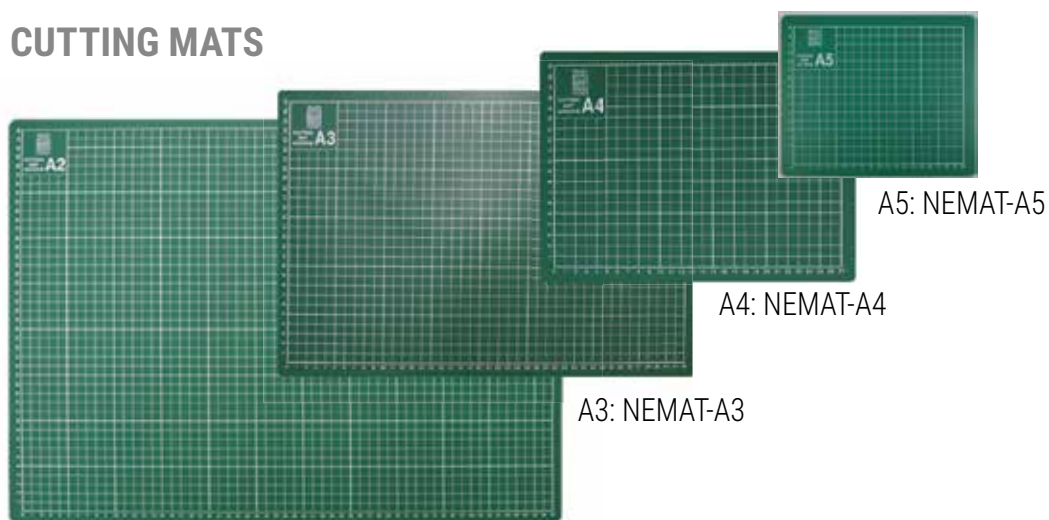
SET 3 FINGERTIP DAUBERS SPONGE



NEDAUB002

ACCESSORI

CUTTING MATS



A5: NEMAT-A5

A4: NEMAT-A4

A3: NEMAT-A3

ART KNIFE



NETAK01

CUTTING KNIFE



NECKF001

A2: NEMAT-A2

SPARE BLADES



NETAK010



NETCK10

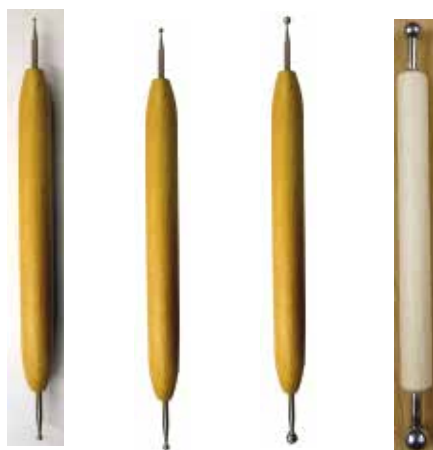


NETAK011



NECFK010

EMBOSSING TOOLS



NEET001
0,8-1 mm

NEET002
1,2-1,8 mm

NEET003
6-8mm

NEET004
6-8mm

PAPER DISTRESS TOOL



NEPDT001

3D SCISSORS



NECIS001

SCENOGRAFIA PRIMAVERA 2020



Pannello color legno naturale
Cod./Code: **SCE01**
Mis/Size: 100X150X1 cm

Pannello color legno naturale
Cod./Code: **SCE02**
Mis/Size: 100X150X1 cm

MANUALE
LIFE 29
ROMANTICA
PRIMAVERA



renkalik

VIA DELL'ARTIGIANATO, 33
40057 GRANAROLO DELL'EMILIA
BOLOGNA - ITALY
TEL: +39 051 760604
FAX: +39 051 761440
info@renkalik.it
www.renkalik.it
www.hobbycraft.it

AGENTE DI ZONA



segui sui nostri canali social